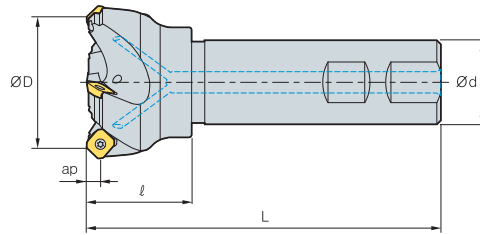


FMAS3000



AA
45°

• AR: 23°
• RR: -17°~-13°

(mm)

Designation		ØD	Ød	ℓ	L	ap	
FMAS	3025HR	2	25	25	35	115	0.4
	3032HR	3	32	25	40	125	0.5
	3032HR-S32	3	32	32	40	130	0.8
	3040HR	3	40	32	40	130	0.9
	3040HR-S40	3	40	40	40	140	1.3
	3040HR-S42	3	40	42	40	140	1.4
	3050HR	4	50	32	40	135	1
	3050HR-S40	4	50	40	40	140	1.3
	3050HR-S42	4	50	42	40	140	1.5
	3063HR	5	63	32	45	135	1.2
	3063HR-S40	5	63	40	45	145	1.6
	3063HR-S42	5	63	42	45	145	1.7

Available inserts

SEET-MF

SEET-MM

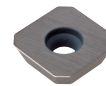
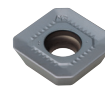
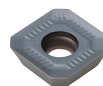
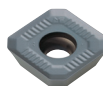
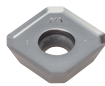
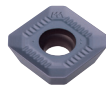
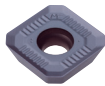
SEET-MA

SEXT-MF

SEXT-MM

SEXT-MR

SEEW



Designation	Cermet		Coated												Uncoated				page	
	CN2000	CN30	NCM325	NC5330	NCM535	NCM545	PC2505	PC2010	PC3600	PC3700	PC6510	PC9530	PC9540	PC5300	PC5400	ST30A	G10	H01		H05
SEET	0903AGFN-MA																			
	0903AGSN-MF										●	●		●	●			●	●	
	0903AGSN-MM		●								●			●	●					
SEXT	0903AGSN-MF							●			●			●	●					
	0903AGSN-MM							●	●	●				●	●					
	0903AGSN-MR																			
SEEW	0903AGTN																			

Parts

Specification		
Ø25~Ø63	FTKA0307	TW09S

Available inserts E19, E20

